

Visitor analysis

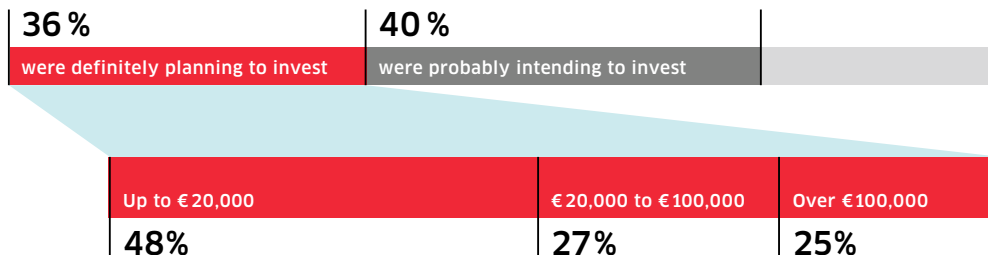
2.0

7.543

visitors in 2023

Overall verdict*
of the trade visitors
(school mark)

Investment intentions*



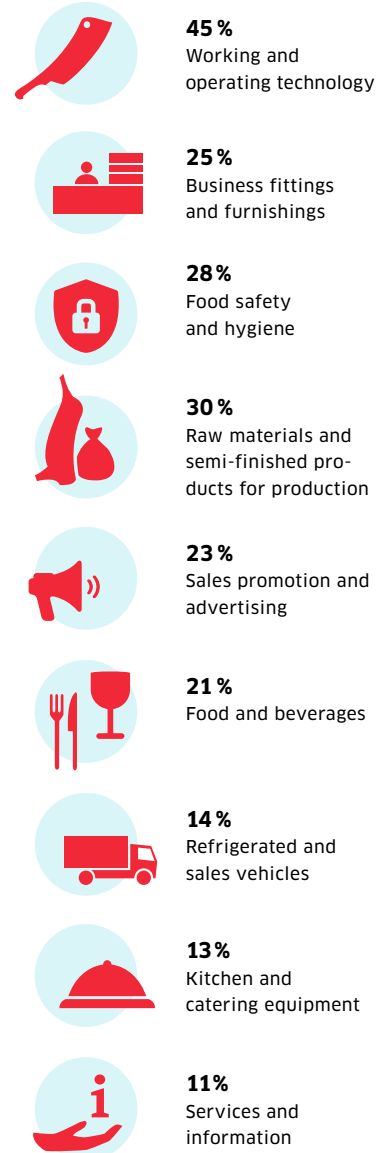
Catchment area of the visitors*



Feedback by visitors*



Visitors' interest in the exhibition areas*



28 to 30 September 2024



All the ingredients for your business success!

- 1** Trade fair for the meat industry in German-speaking countries
- 2** Complete range of products and services for the entire industry
- 3** Large number of trade visitors with investment needs
- 4** High density of companies in southern Germany - right on the doorstep
- 5** Strong networking platform with numerous encounters
- 6** Modern trade fair grounds and all-round service for your participation

Exhibitor information

1.8

208 exhibitors in 2023

Overall verdict* of the exhibitors (schoolmark) sueffa.de/votes

Feedback by exhibitors*

91%

said they would recommend SUFFA to other people

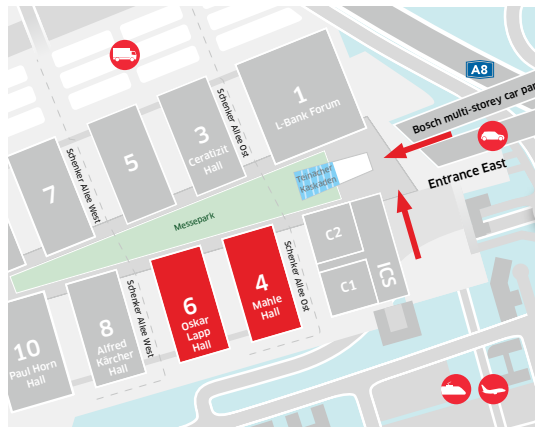
71%

were definitely intending to exhibit again

89%

said they had attained all or some of their trade fair objectives

Messe Stuttgart



- 15,000 parking spaces around the trade fair grounds, own trade fair motorway exit on the A8
- 30 minutes by urban/underground railway from Stuttgart Main Station/city centre
- 300 metres from Stuttgart Airport
- Truck access to every exhibition hall, halls at ground level with large logistics areas

Rental fee (net) for your stand area



Row stand

€ 179/m²

Early bookers:
€ 171/m²



Corner stand

€ 196/m²

Early bookers:
€ 187/m²



End stand

€ 201/m²

Early bookers:
€ 194/m²



Island stand

€ 209/m²

Early bookers:
€ 199/m²

You can find all the information relating to registration at: sueffa.de/2024

Early-bird prices are valid until 29 February 2024

Planning basis for 2024



December 2023

Start of exhibitor advertising



February 2024

Start of hall layout planning



March 2024

Dispatch of stand placement proposals



June 2024

Start of visitor advertising



28 to 30 September 2024

Register now
sueffa.de/registration

Organiser

Landesmesse Stuttgart GmbH
Messeplatz 1
70629 Stuttgart
Tel. +49 711 18560-0

Messe Stuttgart



Exhibitor Support

Sophie Stähle

Manager of Exhibitions and Events
Tel. +49 711 18560-2711
sophie.staehle@messe-stuttgart.de

Uta Götze

Coordinator of Exhibitions and Events
Tel. +49 711 18560-2540
uta.goetze@messe-stuttgart.de

Ronja Schweigert

Coordinator of Exhibitions and Events
Tel. +49 711 18560-2307
ronja.schweigert@messe-stuttgart.de

#sueffa2024



[linkedin.com/showcase/sueffa](https://www.linkedin.com/showcase/sueffa)



[instagram.com/sueffa_stuttgart](https://www.instagram.com/sueffa_stuttgart)



[facebook.com/sueffa](https://www.facebook.com/sueffa)

[sueffa.de](https://www.sueffa.de)

