

THE HOLIDAY EXHIBITIONS OF MESSE STUTTGART

TOURISM

Messe Stuttgart
Key to Markets

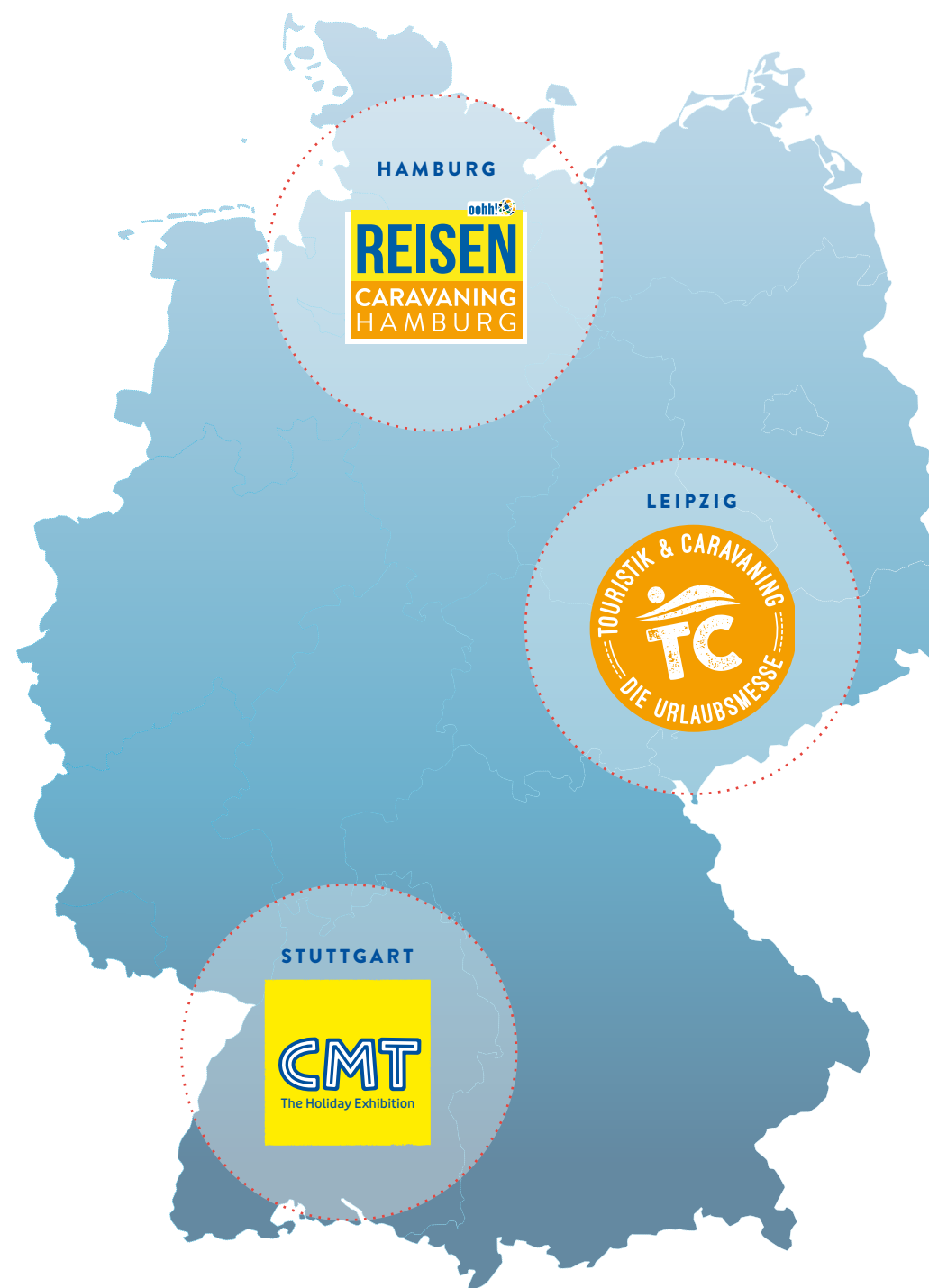


CMT
The Holiday Exhibition

ooh!
REISEN
CARAVANING
HAMBURG



ONE TOPIC, 3 LOCATIONS!



	EXHIBITION	DURATION	NUMBER OF VISITORS
 The Holiday Exhibition	The world's largest consumer show for tourism and leisure	January, 9 Days	268,000
	Northern Germany's largest holiday exhibition	February, 4 Days	60,000
	Central Germany's largest holiday exhibition	November, 5 Days	60,000

Your contacts for all 3 events

Kerstin Heim
 Manager Exhibitions and Events
 T: +49 711 18560-2543
 M: +49 178 3704 220
kerstin.heim@messe-stuttgart.de

Katja Huber
 Manager Exhibitions and Events
 T: +49 711 18560-2690
 M: +49 178 3704 218
katja.huber@messe-stuttgart.de

Franziska Maier
 Manager Exhibitions and Events
 T: +49 711 18560-2666
 M: +49 178 3704 498
franziska.maier@messe-stuttgart.de

TOURISM

THE STAGE IS CLEAR FOR YOUR HOLIDAY DESTINATION!

As a hotel business, travel operator or tourist office - at our holiday exhibitions you will meet an affluent audience who loves to travel and be inspired to a direct booking on-site!

Here is why you should be there:

- **Diverse exhibition range** - From regional excursion destinations to international dream locations. Whether individual tour operator or full-service travel agency with a booking option, everyone will find a place here.
- **Perfect timing** - The exhibitions take place in autumn and winter, just when the booking season starts.
- **High booking interest** - Our visitors do not only bring their desire to travel but also the necessary purchasing power to the event (as shown by surveys of recent exhibitions).
- **Unique experience** - Personal consultations by travel experts and the unmatched variety of offers make the events so special.
- **Exhibitions are events** - Exciting shows, the holiday cinema and lots of inspirations become part of the holiday experience already. This makes visitors happy and ensures loyal regulars.
- **The sector meeting place** - A comprehensive specialist programme attracts experts and decision makers.
- **All-round support by exhibition professionals** - Our experienced project team will be by your side to help you before and after the exhibition.



TOURISM EXHIBITION AREA



Destinations ▪ cities, regions, countries, tourist attractions



Travel organisers & agencies ▪ package, individual and group tours



Leisure facilities



Travel facilities, rental offers ▪ airlines, railway companies, car and camper rental companies



Accommodation ▪ hotels & resorts, holiday apartments, camp sites



Tourist services



Travel media