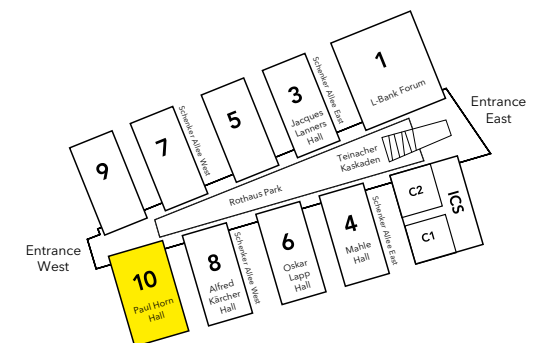
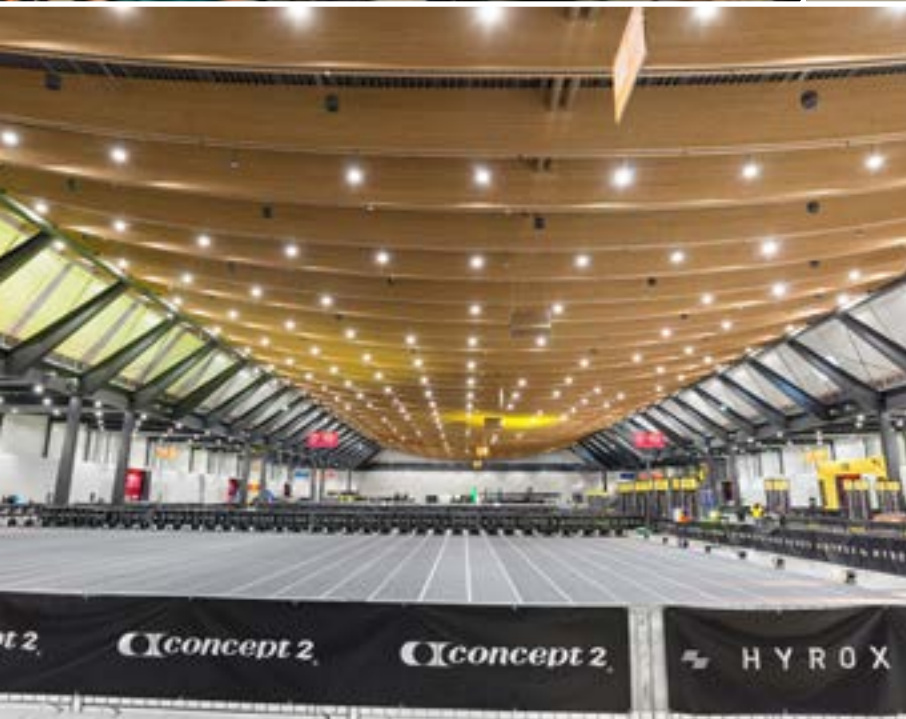


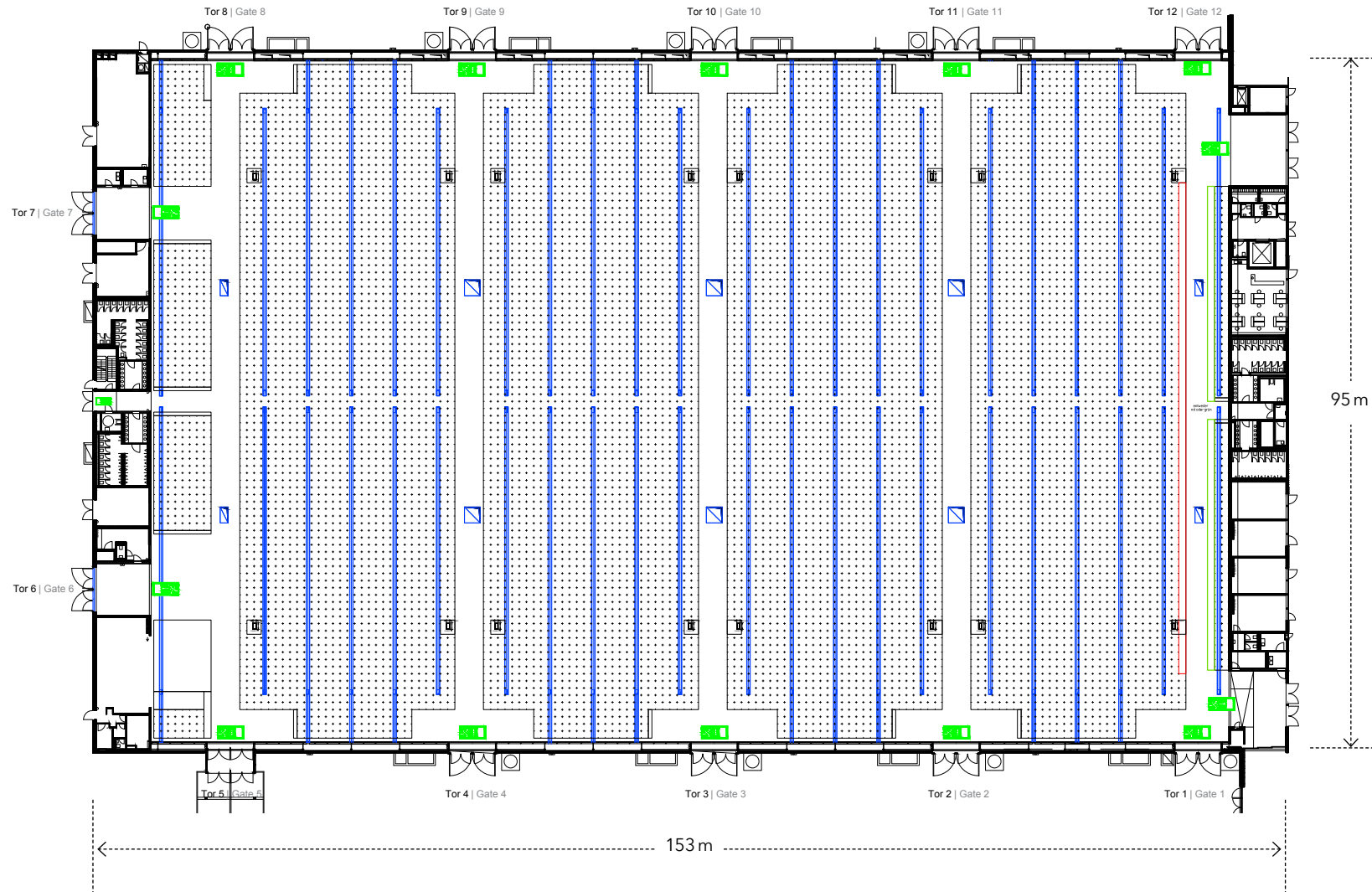


Paul Horn Hall (Hall 10)

While this new hall's roof is built from wood (instead of steel), its curved roof will give it a striking profile designed to fit right in with the rest of our trade fair complex.

The roof will also be covered with plant life and solar panels. This expansion brings Messe Stuttgart's total exhibition space to approximately 120,000 square metres.





Paul Horn Hall (Hall 10)

Dimensions	153.00 x 95.00 m
Total floor space	approx. 14,630 m ²
Clearance height / rigging (lower edge of lights)	
Side aisle	9.00 - 9.60 m
Main area	12.20 - 16.90 m
Access gates	12
Lighting	300 lux (minimum) Natural light (mechanical blackout system available)
Floor loading capacity	33 kN/m ²
Channel loading capacity	16 kN/m ²
Ventilation	Layered Displacement diffusers and jet nozzle
Channel loading capacity	16 kN/m ² s
Utility connections	Water, wastewater, compressed air, gas, electricity, telecommunication

Meeting rooms (ground floor):

4 rooms of 40 m² each, separated by adjustable partitions

