

ICS Seminar area C10 - upper floor: Technical data



Size/dimensions/capacities

- Total floor space 257 m²
- Ceiling height/clearance height 2.58 m/2.52 m

The C10 area provides eleven meeting rooms.

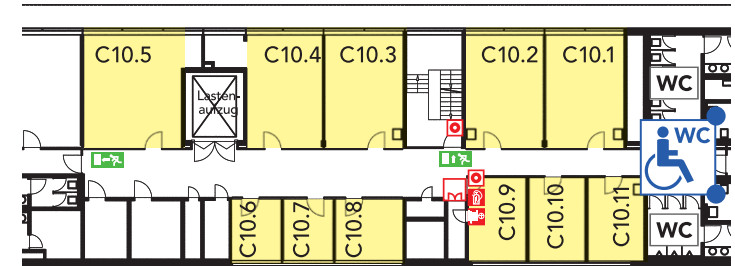
	m ²	••••	⊕	⊕	⚪
C10.1	31	30	10	12	x
C10.2	31	30	10	12	x
C10.3	31	30	10	12	x
C10.4	34	30	10	12	x
C10.5	40	40	14	16	x
C10.6	11	--	--	6	--
C10.7	11	--	--	6	--
C10.8	15	--	--	7	--
C10.9	18	--	--	10	--
C10.10	17	--	--	8	--
C10.11	17	--	--	8	x

Delivery to rooms

- Access via the ICS foyer or via the East Entrance
- Delivery via the delivery areas of C1 or C2
- Transport to upper floor via two freight elevators, permitted weight up to 3,000 kg each
- Dimensions of freight elevators (C10 area) (DxW) 3.64 m x 2.55 m

Room specifications

- Barrier-free access
- Lighting: fluorescent lamps
- Daylight
- Control panel for room lighting/black-out option
- Black-out option with Venetian blinds
- Air-conditioning
- Type of floor carpet
- Floor loading capacity 500 kg/m²
- View to the C2 area from six rooms
- Partly equipped with kitchenette and washbasin



Technical equipment and communication

- No fixed conference technology available.
- Telecommunication connections

