

Hand in hand for tomorrow



# AI in mechanical engineering and medium-sized companies

Timo Gessmann, CTO, SCHUNK

# Our corporate values



**Friedrich Schunk**  
Founder



**Heinz-Dieter Schunk**  
Honorary Chairman  
of the Board  
Son of the founder

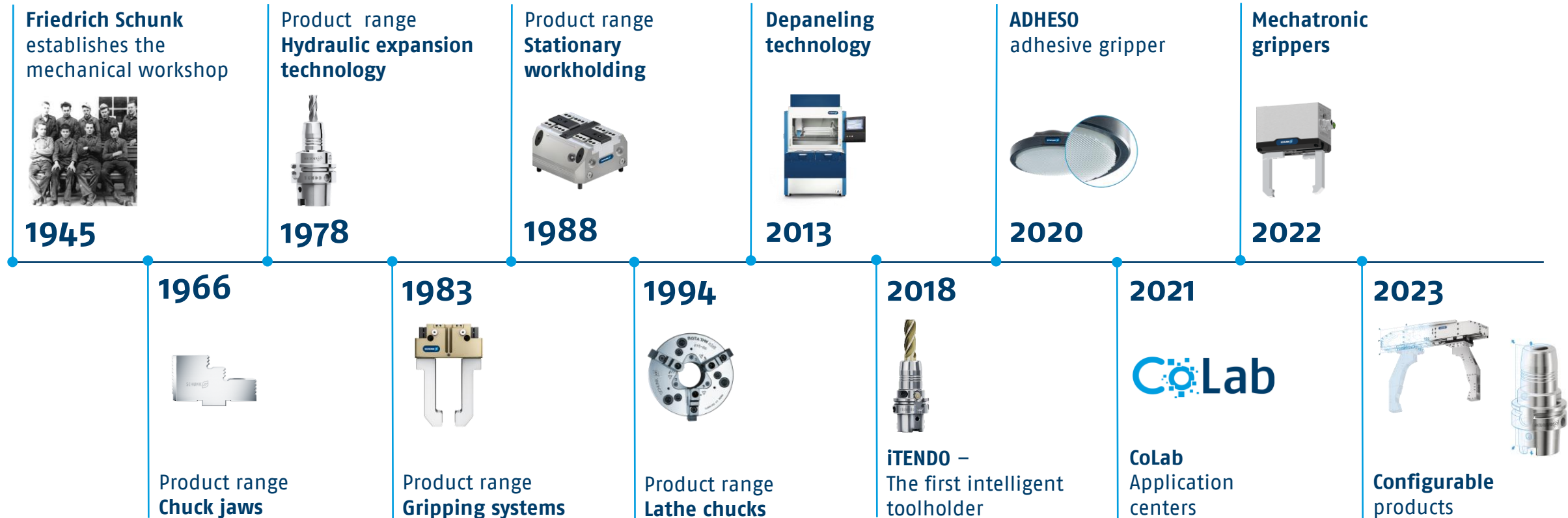


**Kristina I. Schunk**  
Chairwoman of the  
Management Board/CEO  
Granddaughter of the  
founder



**Henrik A. Schunk**  
Chairman of  
the Board  
Grandson of the  
founder

# From a workshop to a partner for productivity



# Challenges of SMEs



Our path forward



# Next Level Digitalization

Digital  
competence &  
infrastructure

1

Digital internal  
processes

2

Digital external  
processes

3

Automation  
internal & external

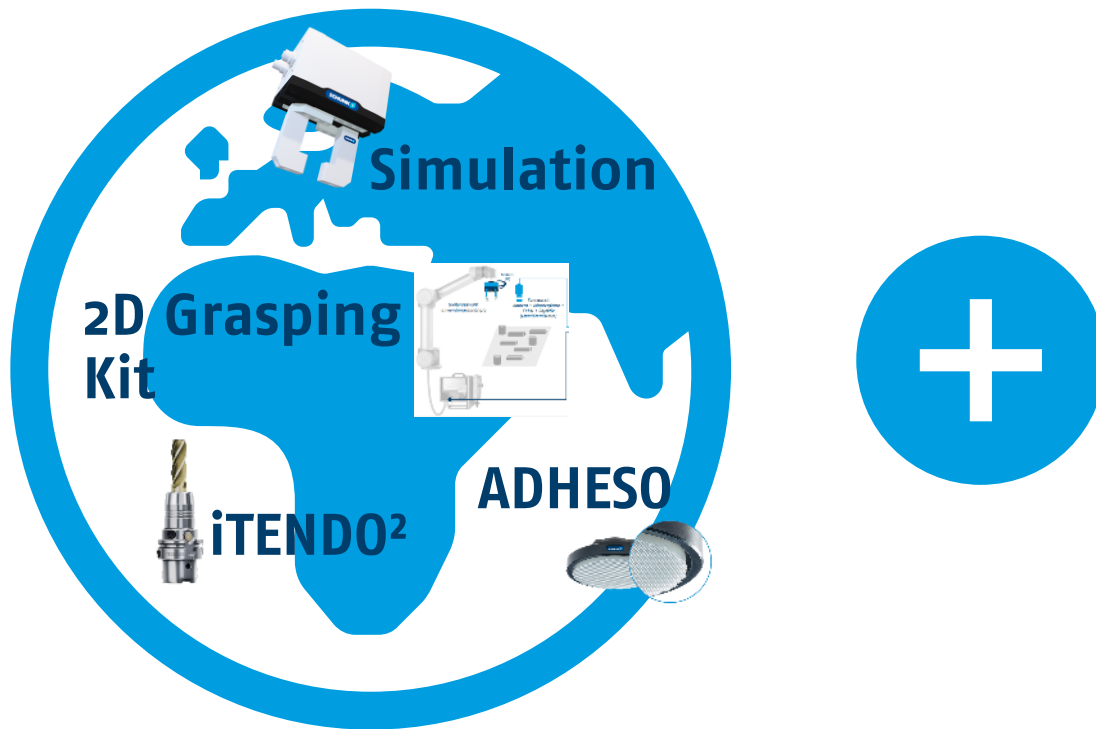
4

Digital  
products &  
services

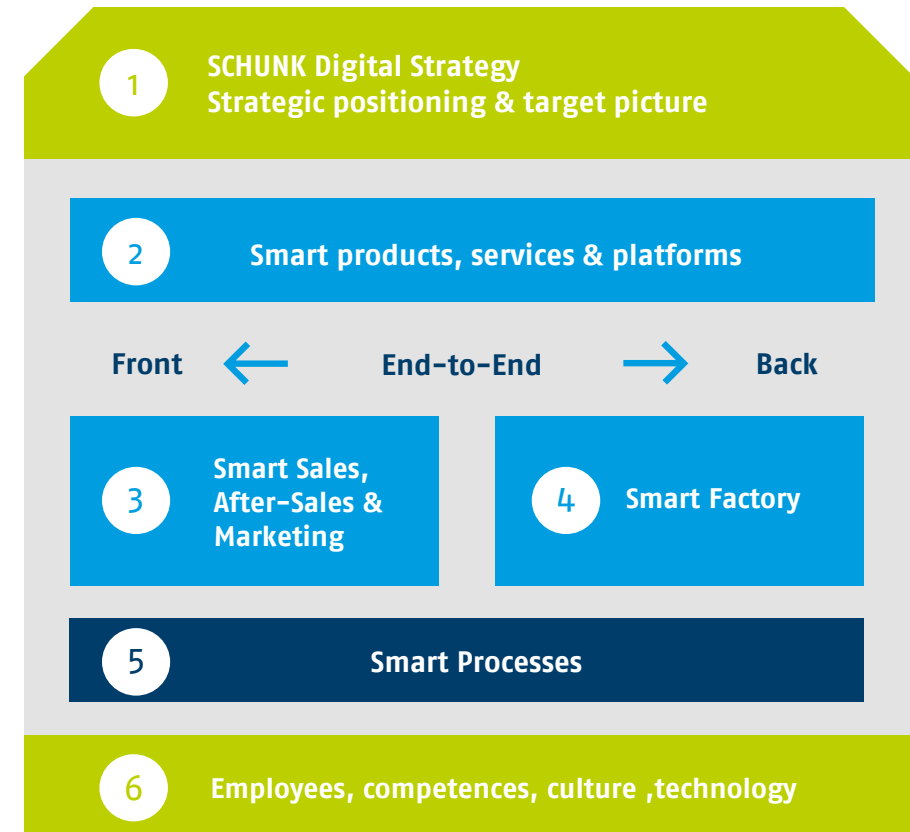
5

We offer digital  
transformation for  
everyone.

# From manufacturing to digitalization for everyone



Product & manufacturing world  
Industry





# Creating enthusiasm for new technologies

## SCHUNK Tech Talks

SCHUNK 

**3** Internal  
referees



**110**  
Participants



- + Competency development
- + Culture
- + Employee enthusiasm



**3** Lectures

AI & image editing, logistics & flexible grasping, digital tools



# SCHUNK Gen-AI Strategy

**Products & Services**

- Customer value-add by new products & services
- Increase customer productivity

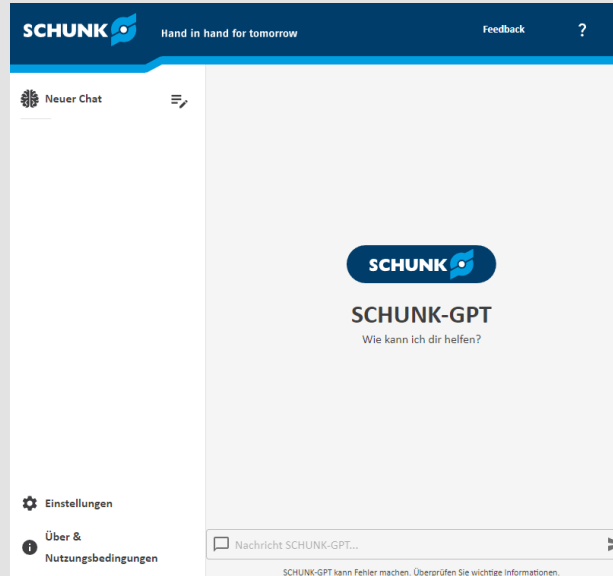
**Core Processes**

- Increase internal efficiency and productivity

**Support Processes**



# AI applications @ SCHUNK



## Processes

Digital engineering  
Smart sales



## Services

Product configurators  
Simulation & Digital Twins



## Products

2D Gasping Kit  
iTENDO<sup>2</sup>

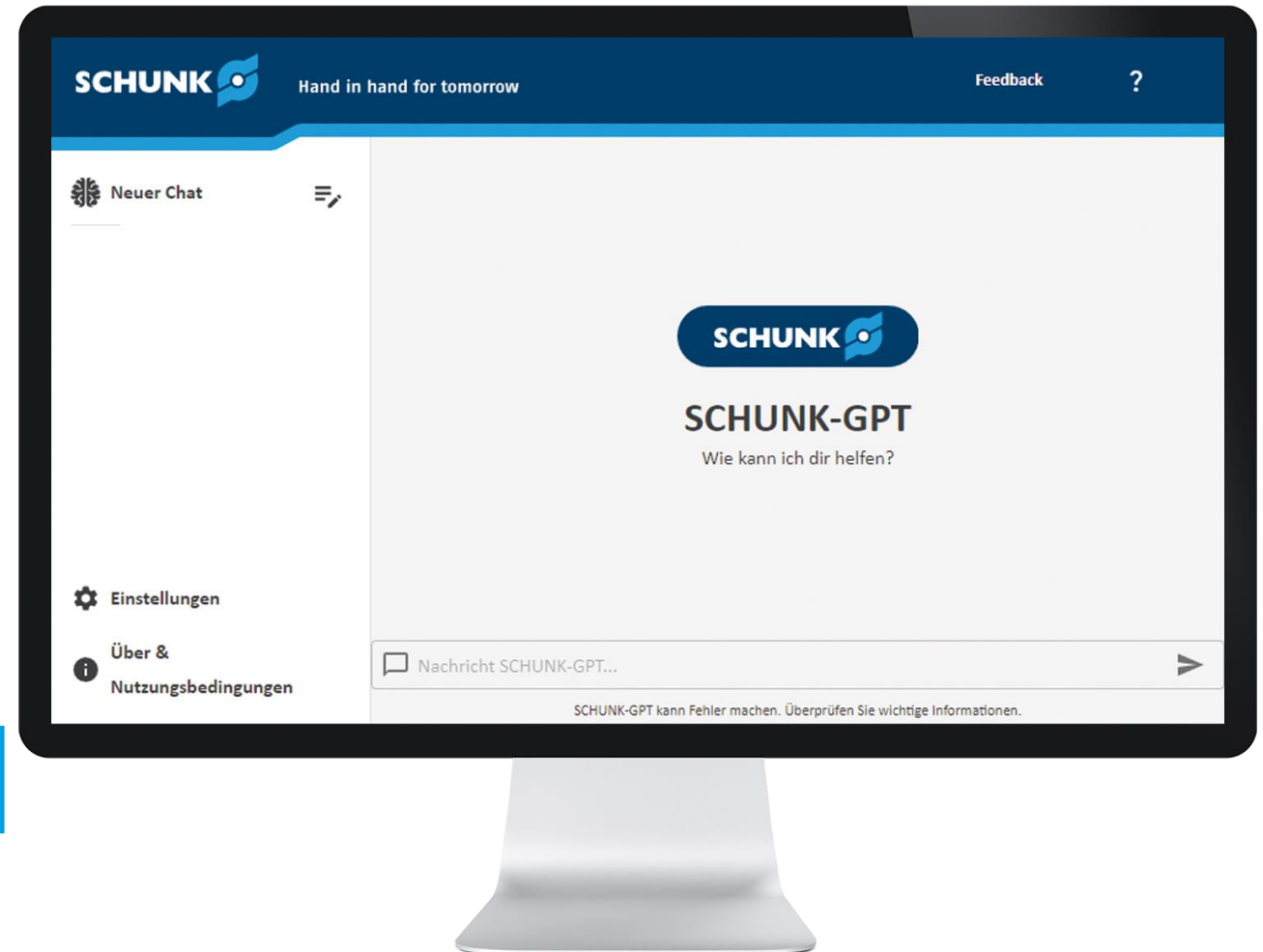
# SCHUNK GPT Fields of applications

- + Sales
- + Marketing
- + Products
- + Mechanics development
- + Software development
- + Knowledge management

It's great that SCHUNK is actively engaging with it.

Great consulting support!

Great time saving: up to **30%** when creating Social Media posts.







# i...T|E|N|D|O<sup>®2</sup>

- + Real-time process transparency
- + Process optimization
  - + Better tool service life
  - + Better surface quality
  - + Faster processes
- + Acceleration sensor 100 g integrated
- + Wireless signal transmission up to 30,000 RPM



**SCHUNK**



## iTENDO<sup>2</sup> pad

The new iTENDO<sup>2</sup> with its own tablet PC

- Direct connection to the tablet PC without machine connection
- Display chatter index (10 Hz data)
- Alarm and trend evaluation on the tablet

Your advantages:

- High process transparency
- Sustainable process optimization
- Sound process comparisons

Where and what we invest in

# Mechanical engineering goes Metaverse

- ⊕ Increased productivity through planning and simulation of automated processes in the NVIDIA Omniverse



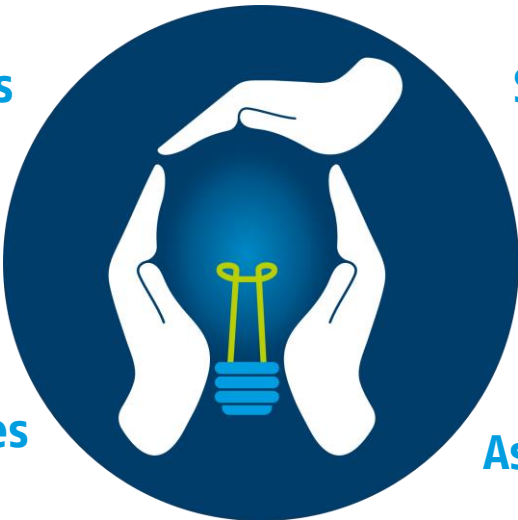


# Innovation through Collaboration

Customers

Suppliers

Start-ups



Universities

Associations

Research Institutes



# Don't just talk about it. DO IT!



Visit us at AMB in Stuttgart:  
Hall 1 | Booth 1G30



**Hand in hand for tomorrow**

© SCHUNK GmbH & Co.KG  
Schunk.com